

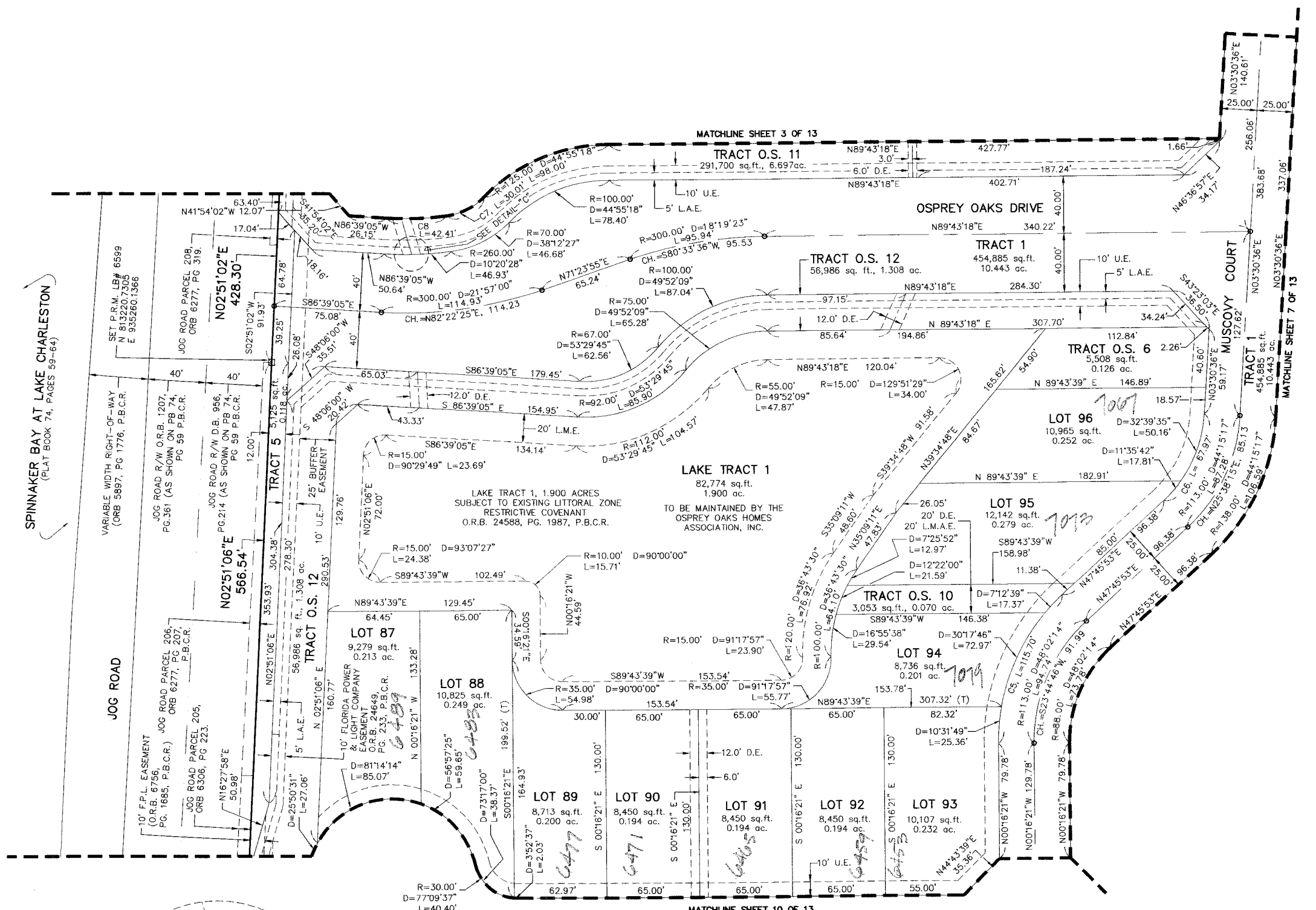
0942.000

OSPREY OAKS P.U.D.

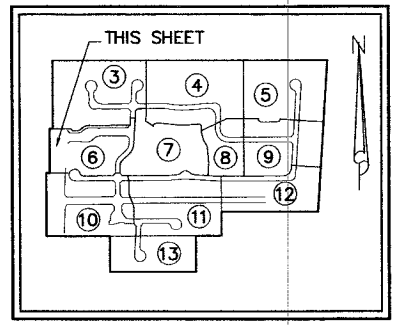
A PARCEL OF LAND LYING WITHIN THE NORTHEAST ONE-QUARTER OF SECTION 10, TOWNSHIP 45 SOUTH, RANGE 42 EAST, PALM BEACH COUNTY, FLORIDA
SHEET 6 OF 13

STATE OF FLORIDA)
COUNTY OF PALM BEACH) S.S.

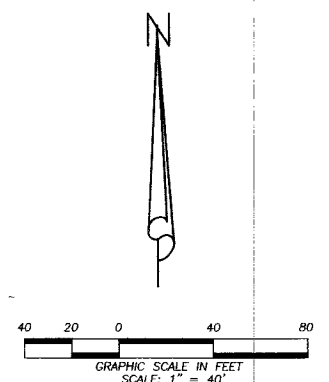
THIS INSTRUMENT WAS FILED FOR RECORD AT _____ M. THIS _____ DAY OF _____ 20____ AND DULY RECORDED IN: PLAT BOOK _____ ON PAGE _____ SHARON R. BOCK CLERK & COMPTROLLER PALM BEACH COUNTY BY: _____ DEPUTY CLERK



SPINNAKER BAY AT LAKE CHARLESTON
(PLAT BOOK 74, PAGES 59-64)



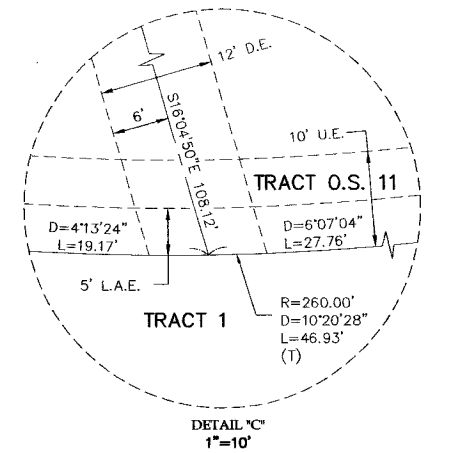
KEY MAP NOT TO SCALE



- LEGEND**
- D = CENTRAL ANGLE
 - L = ARC LENGTH
 - L.A.E. = LIMITED ACCESS EASEMENT
 - LB = LICENSED BUSINESS
 - L.M.A.E. = LAKE MAINTENANCE ACCESS EASEMENT
 - L.M.E. = LAKE MAINTENANCE EASEMENT
 - O.R.B. = OFFICIAL RECORD BOOK
 - P.B. = PLAT BOOK
 - P.B.C.R. = PALM BEACH COUNTY RECORDS
 - P.B.C.L.S.E. = PALM BEACH COUNTY LIFT STATION EASEMENT
 - P.B.C.U.E. = PALM BEACH COUNTY UTILITY EASEMENT
 - P.C.N. = PARCEL CONTROL NUMBER
 - PG. = PAGE(S)
 - P.R.M. = PERMANENT REFERENCE MONUMENT
 - R = RADIUS
 - U.E. = UTILITY EASEMENT
 - (T) = TOTAL
 - = PERMANENT REFERENCE MONUMENT (P.R.M.) 4" X 4" CONCRETE MONUMENT WITH P.K. NAIL IN BRASS DISC STAMPED "PRM LB 6599"
 - = (P.C.P.) SET MAG NAIL IN BRASS DISC LB 6599

CURVE TABLE

CURVE	RADIUS	CENTRAL ANGLE	LENGTH
C5	138.00'	48°02'14"	115.70'
C6	88.00'	44°15'17"	67.97'
C7	45.00'	38°12'27"	30.01'
C8	235.00'	10°20'28"	42.41'



THIS INSTRUMENT WAS PREPARED BY: DAVID A. BOWER, P.S.M. #5888 IN THE OFFICES OF DENNIS J. LEAVY AND ASSOCIATES, INC. CERTIFICATE OF AUTHORIZATION NUMBER: LB6599 460 BUSINESS PARK WAY, SUITE B ROYAL PALM BEACH, FLORIDA 33411 PHONE: (561) 753-0650 FAX: (561) 753-0290

DENNIS J. LEAVY & ASSOCIATES, INC.
LAND SURVEYORS AND MAPPERS

460 BUSINESS PARK WAY • SUITE B • ROYAL PALM BEACH, FL • 33411
PHONE: (561) 753-0650 FAX: (561) 753-0290

SCALE: AS SHOWN CHECKED BY: DAB DATE: 01/04/11
DRAWN BY: RRM JOB NO.: 10-062-001